

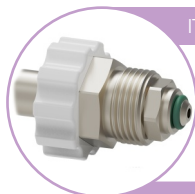
## Gas regulator fixed output with double outlet ball flowmeter



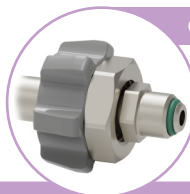
**JUST PRESS F** are specially designed to be used in medical facilities with no oxygen piped network available, not recommended for home care therapy services.

### Just Press F Features

- Piston gas regulators for its use on oxygen cylinders at 200 bar with a Spanish standard connector (*consult our staff about other connections*).
- They incorporate a flowmeter, which is **360° twistable** to facilitate measurements. Available with **4, 6 or 15 l/min** scales.
- They incorporate a double scale manometer (bar/psi) and color code, to read the pressure of the cylinder.
- The flowmeter has an inferior outlet for a humidifier bottle (*not included*) and a side one for a nebulizer, which can be easily selected by means of a quarter of a turn revolver.



ITC EP-6



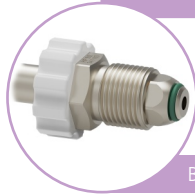
CGA V-1



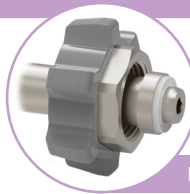
Pin-Index

### INLET CONNECTION STANDARDS

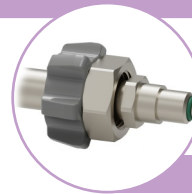
(Consult our staff about other standards)



BS 341-3



DIN 477-1



NF E29-116

### TECHNICAL SPECIFICATIONS

<b>Materials:</b>	Anodized aluminium, polycarbonate, ABS, Polyamide and chromed brass
<b>Maximum low flow:</b>	20 l/min
<b>Precision:</b>	± 10 %
<b>Maximum supply pressure:</b>	200 bar
<b>Available flows:</b>	0 - 4 l/min (max < 8 l/min) 0 - 6 l/min (max < 10 l/min) 0 - 15 l/min (max < 25 l/min)
<b>Inlet standards:</b>	ITC EP-6, BS-341, DIN 477, ISO 5145, CGA V-1, NF E29-650, etc...
<b>Outlet standar:</b>	DISS 9/16" outlet connection with a detachable tube pin
<b>Point of design:</b>	4.5 ± 0.5 bar
<b>Calibration:</b>	101,3 kPa and 23 °C
<b>Dimensions:</b>	145 x 180 x 100 mm
<b>Weight:</b>	990 g
<b>Standards:</b>	In compliance with Directive 94/43/EEC In compliance with UNE-EN ISO 10524 In compliance with UNE-EN ISO 15002
<b>Classification:</b>	Class IIb