

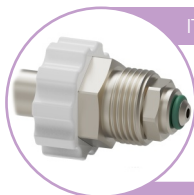
N₂/NO gas regulator with connector

JUST PRESS B gas regulators are specially designed for its use in hospital **N₂/NO** therapy services.

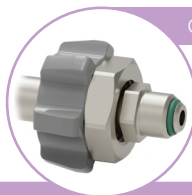
Just Press P Features



- Piston gas regulators for its use on **N₂/NO** cylinders at 200 bar. Consult our staff about inlet connections.
- They incorporates a side gas outlet (please see "*Just Plug: Connectors and valves family*" to consult the standards available).
- They incorporate a double scale manometer (bar/psi) and color code, to read the pressure of the cylinder.



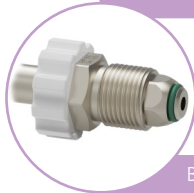
ITC EP-6



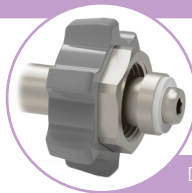
CGA V-1



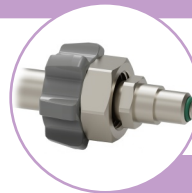
Pin-Index



BS 341-3



DIN 477-1



NF E29-116

INLET CONNECTION STANDARDS

(Consult our staff about other standards)

TECHNICAL SPECIFICATIONS

Materials:	Stainless Steel, Polycarbonate, ABS and FKM
Precision:	± 10 %
Maximum supply pressure:	200 bar
Outlet connections:	DIN 13260, NF S 90-116, BS 5682, SS 8752430, ISO 18082 (NIST), CGA V-5 (DISS), etc...
Inlet connetions:	ITC EP-6, BS-341, DIN 477, ISO 5145, CGA V-1, NF E29-650, etc...
Point of design:	4,5 ± 0,5 bar
Calibration:	101,3 kPa y 23 °C
Dimensions:	Ø40 x 140 mm
Weight:	1.200 grs
Standards:	In compliance with Directive 93/42/EEC In compliance with UNE-EN ISO 10524 In compliance with UNE-EN ISO 15002
Classification:	Class IIb